

Japanese Beetle Presentation Summary

July 7th, 2020

The ISCBC is a non-profit charity organization that works with stakeholders to help prevent the spread of invasive plants and animals.

History of Japanese Beetle (*Popillia japonica*) in Canada

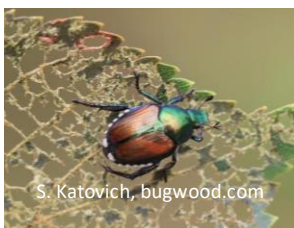
- First detected in 1939 in Nova Scotia
- Established through the East coast
- Regulated plant pest in Canada & US
- CFIA confirmed detection at David Lam Park, False Creek in July 2017

Impacts

- Adults feed on the above ground parts of over 300 species - roses are a favourite
- Could cause serious damage to BC's agricultural and horticultural sector

Damage

- Adult feeding results in skeletonized leaves
- Larvae feeding results in patchy dead grass
- Preferred grasses:



Kentucky Bluegrass
Perennial Ryegrass

Tall Fescues
Bentgrass

Identifying Japanese Beetle



1. Bronze colored elytra (wing covers)
2. Metallic emerald green head and body
3. 6 white tufts of hair on either side of their abdomen (12 total)
4. Oval shaped body, ~10mm long
5. Spikey black legs (male), and broad black legs (female)

Treatment

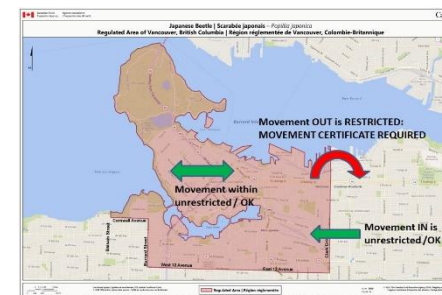
Acelepryn

Used to target young larvae, Acelepryn is applied manually by certified professionals. It is a low risk larvicide and does not pose any risk to people, pets, mammals, birds, bees, butterflies, or other plants.

BeetleGONE!™

Used to target adult beetles, BeetleGONE! is applied to the foliage of vulnerable plants. It does not pose any harm to people or animals. You can purchase BeetleGONE! at your local garden retailer.

Regulated Area in Vancouver



Movement of certain plant material out of the regulated area is restricted in Vancouver. Articles such as grass clippings, pruning waste, plants with soil attached, etc. must be disposed of at the Temporary Transfer Station, or in your municipal green bin.

Temporary Transfer Station (TTS)

Open from June 15th to October 15th, located at 301 W 1st St, the TTS is run by the City of Vancouver to provide a location to properly dispose of plant material. For a complete list of accepted material, see the [CFIA's website](#).

Trapping

Traps are set throughout the Lower Mainland from Hope to North Vancouver. These are used to monitor the spread, so if you see one please do not tamper with it.



What Can You Do?

Report! If you see any suspected beetles, please report it using the Report-Invasives-App, or photos with location to:

cfia.wstjb-sj.acia@canada.ca